

Nature and landscape study plantation Wechi

Curaçao, 2012

Client info:

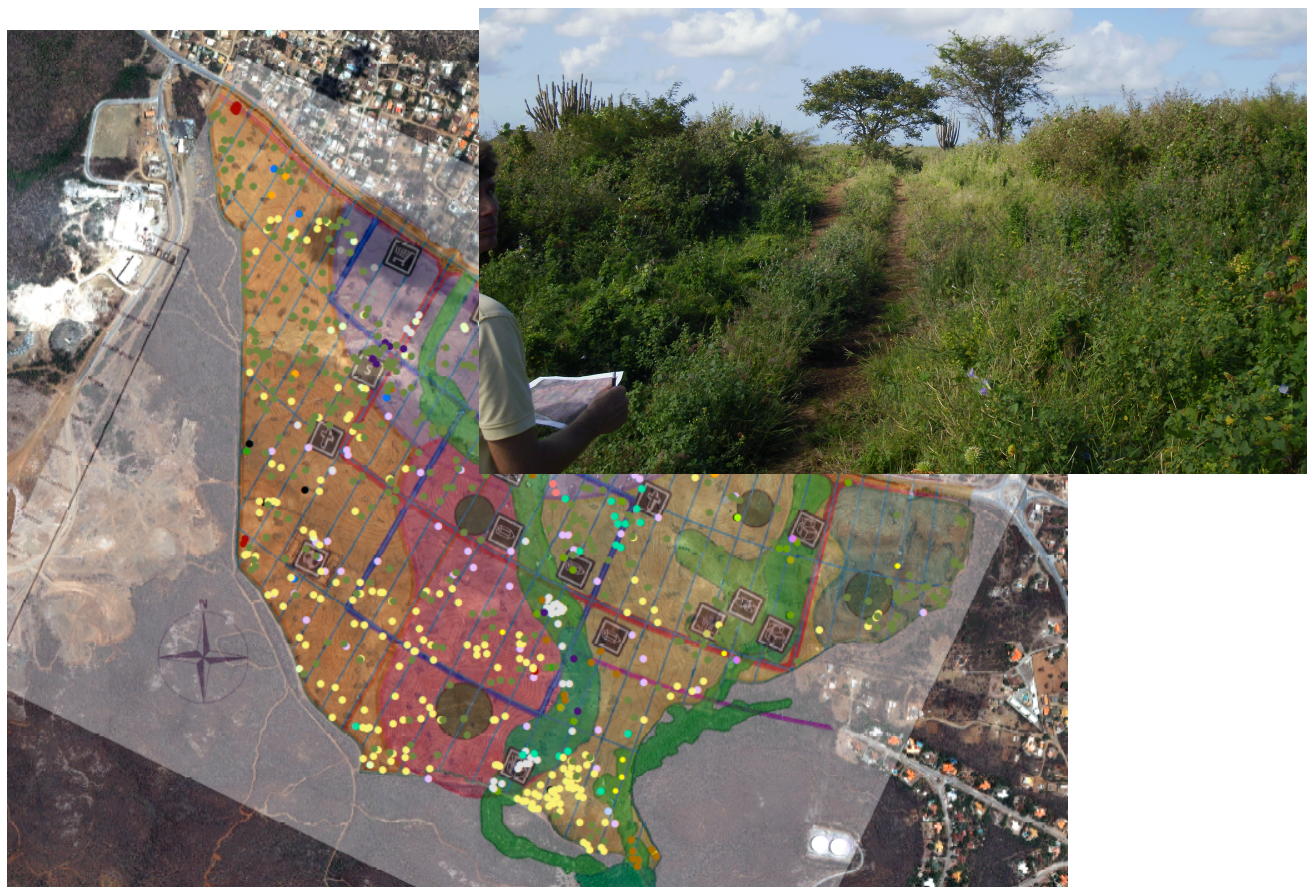


Name: Fundashon Kas Popular (FKP)

Sector: Government

Location: Curaçao

FKP is a government owned foundation for social housing that builds, rents and sales houses mainly for the low income group.



Rationale: FKP plans to develop the area of the former plantation Wechi for housing. A master plan and a development plan for this had already been developed. In order to approve these plans, a study into nature values in the area was demanded by the government.

Approach: EcoVision conducted a desktop study for current and historical nature values. We conducted field research for flora, birds and bats and other fauna. All larger trees and cacti were located by GPS and indicated on a GIS map.

Outcome: Development of the area has started and most of the mapped trees and cacti are incorporated in the plan.